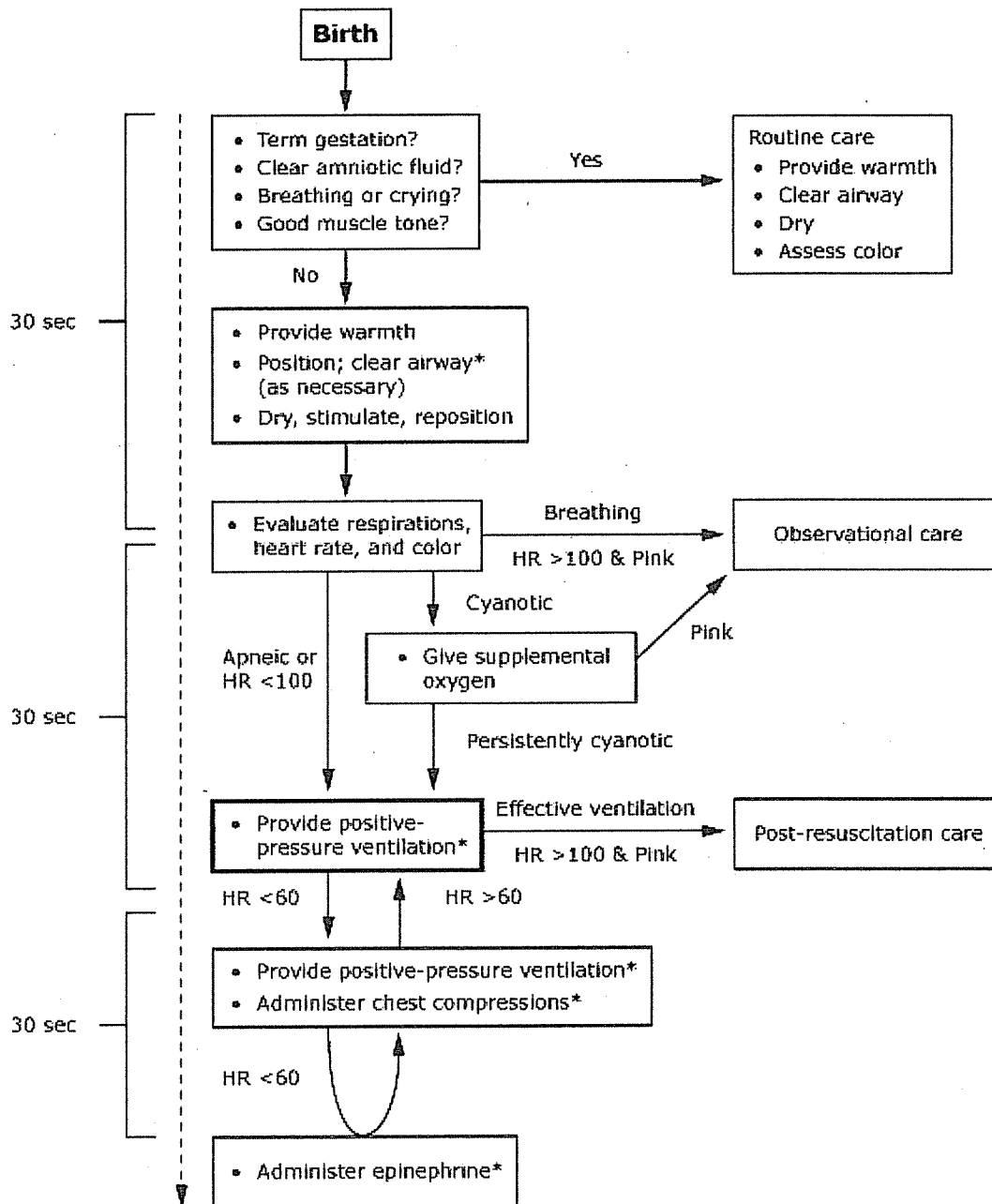


Medications used in neonatal resuscitation

Medication	Action	Indication	Dose and route
Epinephrine	Increases cardiac output by increasing the heart rate and myocardial contractility, increases blood pressure by causing peripheral vasoconstriction.	Heart rate <60 per minute despite adequate ventilation and chest compressions	0.1-0.3 mL/kg IV 0.3 to 1 mL/kg ET 1:10,000 solution (concentration 0.1 mg/mL)
Isotonic saline	Increases intravascular volume	Suspected hypovolemia	10 mL/kg of 0.9 percent saline solution IV over 5 to 10 minutes
Naloxone	Reverses opiate-induced respiratory depression	Persistent severe respiratory depression after heart rate and are color restored AND history of maternal narcotic use within past four hours	1 mg/kg IV or IM
Sodium bicarbonate	Corrects metabolic acidosis	Suspected or documented metabolic acidosis, given only after adequate ventilation and circulation has been established	2 mEq/kg slow IV administration over 2 minutes

IV: intravenous; ET: endotracheal; IM: Intramuscular.

Neonatal advanced life support (NALS)-neonatal resuscitation



* Endotracheal intubation may be considered at several steps.
 Reproduced with permission from: Kattwinkel, J. *Textbook of neonatal resuscitation, 5th ed, American Academy of Pediatrics, 2006.*
 Copyright ©2006 American Academy of Pediatrics.